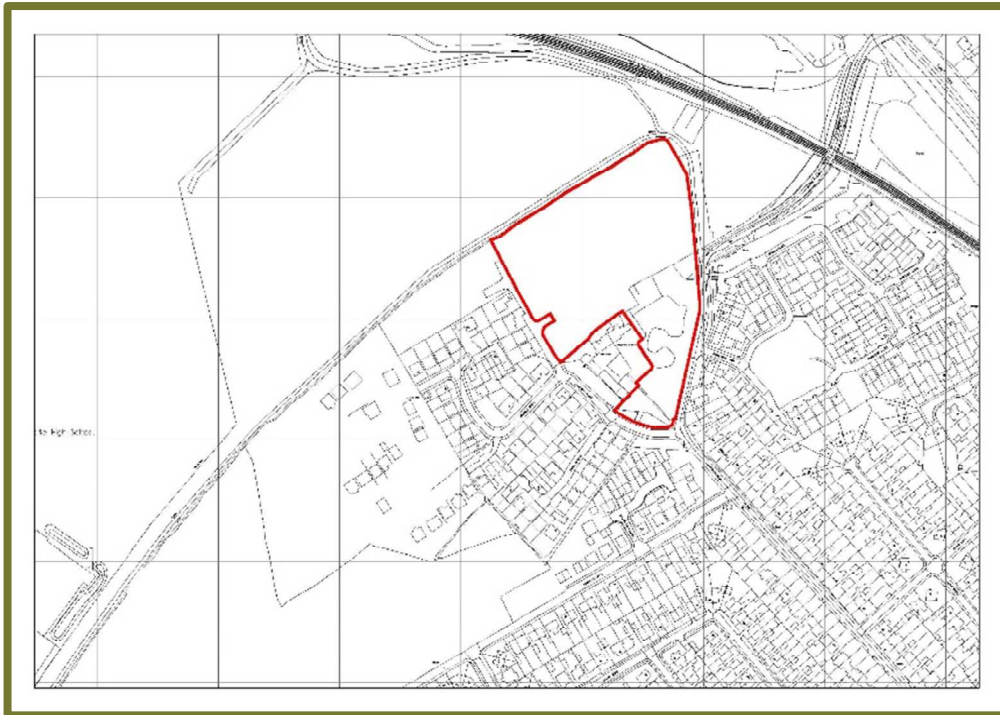


COMMUNITY CONSULTATION

PROPOSED RESIDENTIAL DEVELOPMENT ON LAND AT KINGSLEY FARM, HARROGATE



A Consultation Event will be held at Harrogate High School Main Hall on Saturday 11th December between 13:00 and 18:00.

Flyers with details of the proposed development have been circulated throughout the area. Additional information will be displayed at the Public Consultation Event.

Details of the proposals and copies of the consultation leaflets circulated in the locality are available now at:



www.elgplanning.co.uk/consultation

Comments on the development should be submitted by email, through the ELG Website or post to the address below. Please leave your name and address. All responses will be held by the company in accordance with GDPR 2018. Your contact details will not be made public or be retained on any database.

ELG Planning Ltd, Princes House, 8 Princes Street, Harrogate, HG1 1HN

Email: consultation@elgplanning.co.uk

Web: www.elgplanning.co.uk