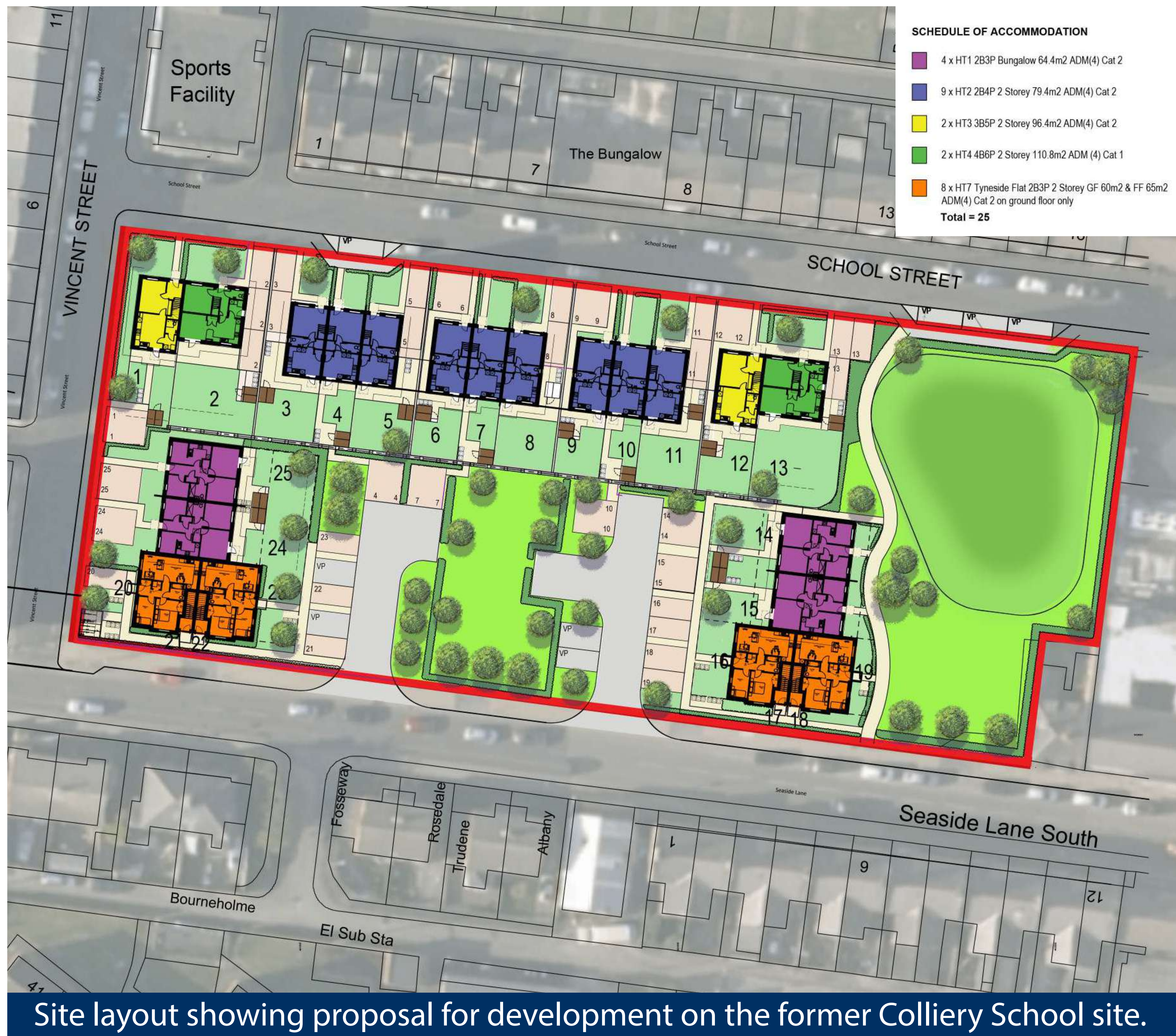


# Former Easington Colliery School, Seaside Lane

## Easington Colliery

### Community Consultation



As part of the residential development of the former Easington Colliery School, today's exhibition provides information on what the development entails. The adjacent image outlines the site layout we are consulting on today.

The former school seen below was unoccupied from 1997 until its demolition was approved in 2020. The site currently sits as an unused grassed area.



Easington Colliery School



Current view from School Street

### Our Proposal:

A scheme of around 25 modern, spacious and energy efficient family homes and bungalows are proposed, with all homes proposed as council houses, as part of the council house delivery programme.



Section taken from School Street



Section taken from Vincent Street

We would welcome your comments on the draft development proposals. Feedback will be used within the submission of our planning application. You can make your views known in the following ways:

Complete and submit the electronic form available at:  
<https://elgplanning.co.uk/projects/easington-colliery/>



Write to:

ELG Planning, 55 Coniscliffe Road, Darlington, Co. Durham, DL3 7EH

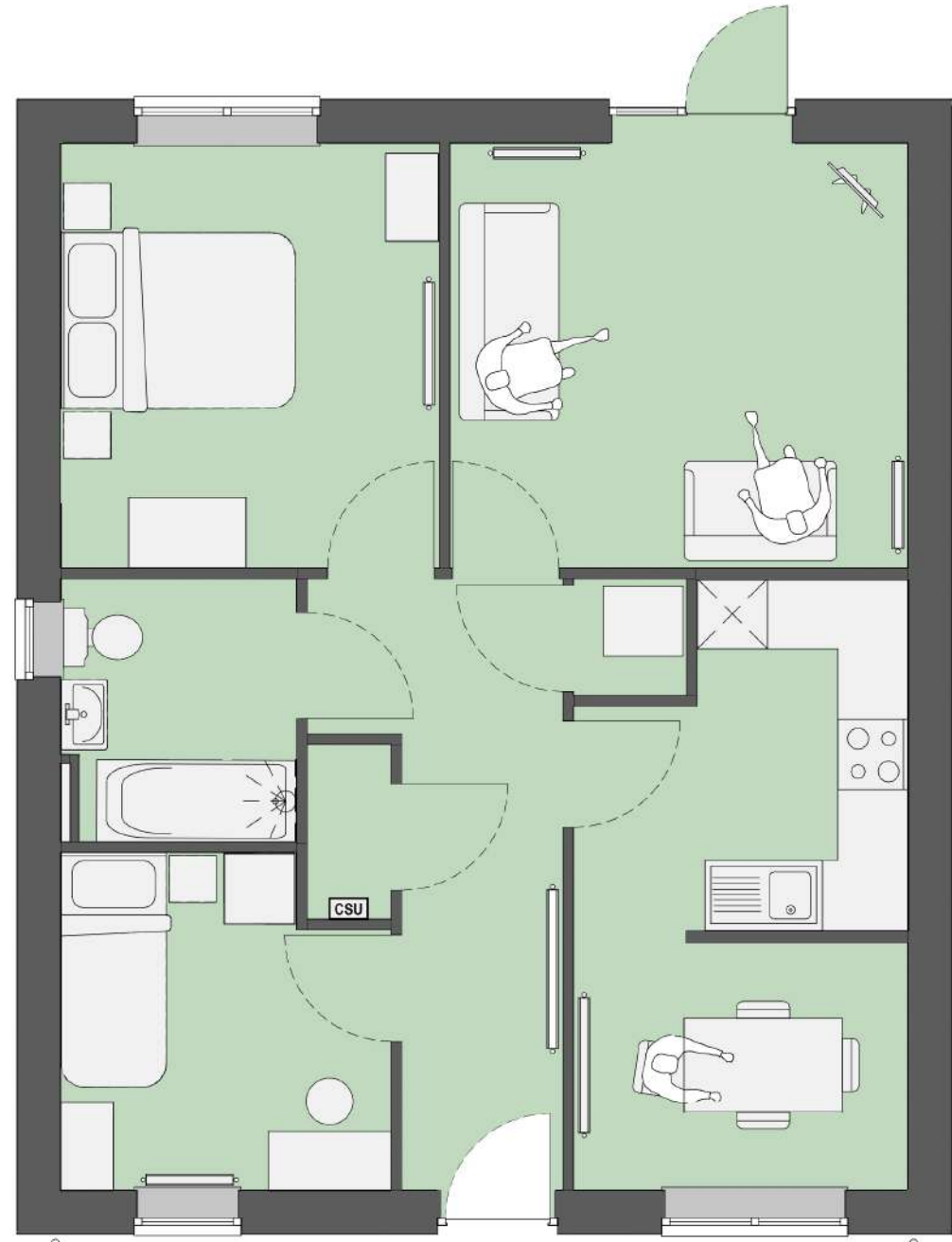
Send an email to:

[consultation@elgplanning.co.uk](mailto:consultation@elgplanning.co.uk)

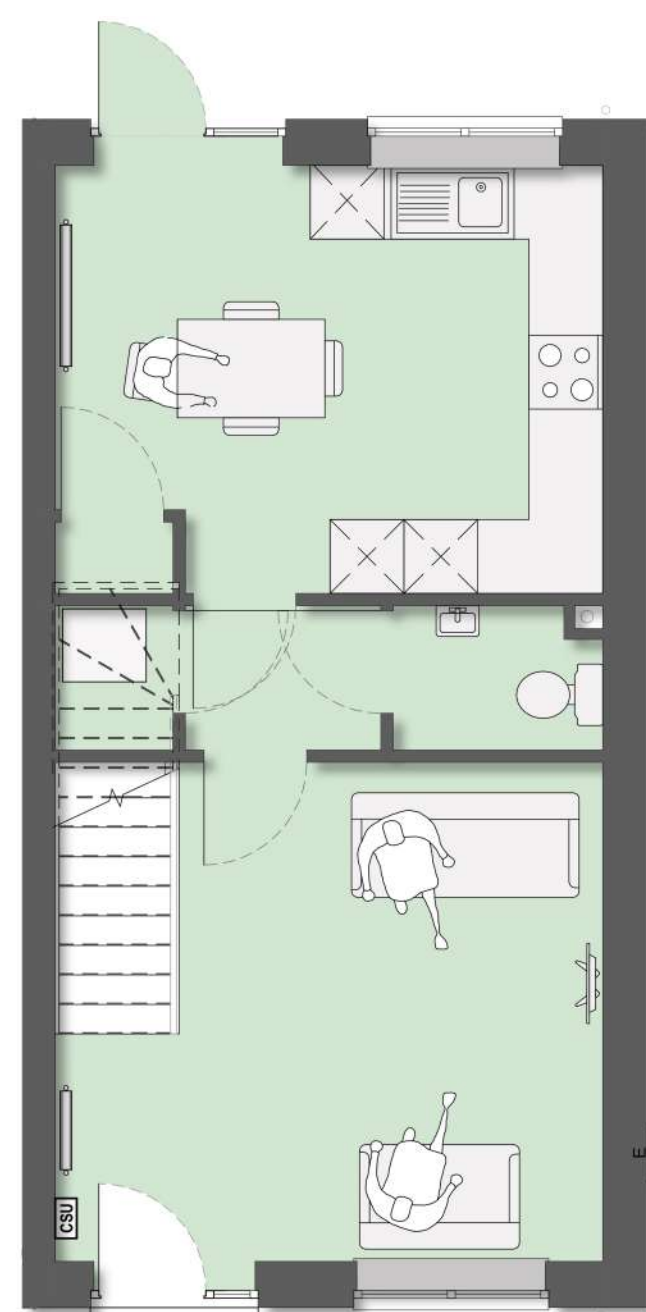
leaving your name and address along with your comments.

# Former Easington Colliery School, Seaside Lane Easington Colliery Community Consultation

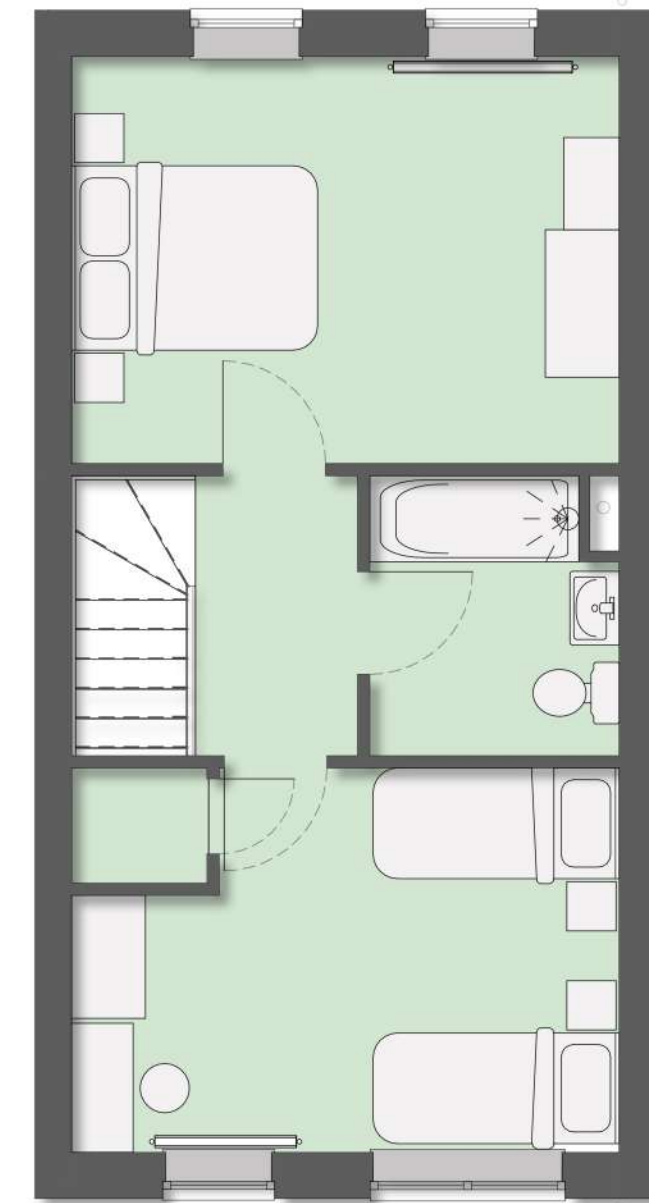
## House Type Plans



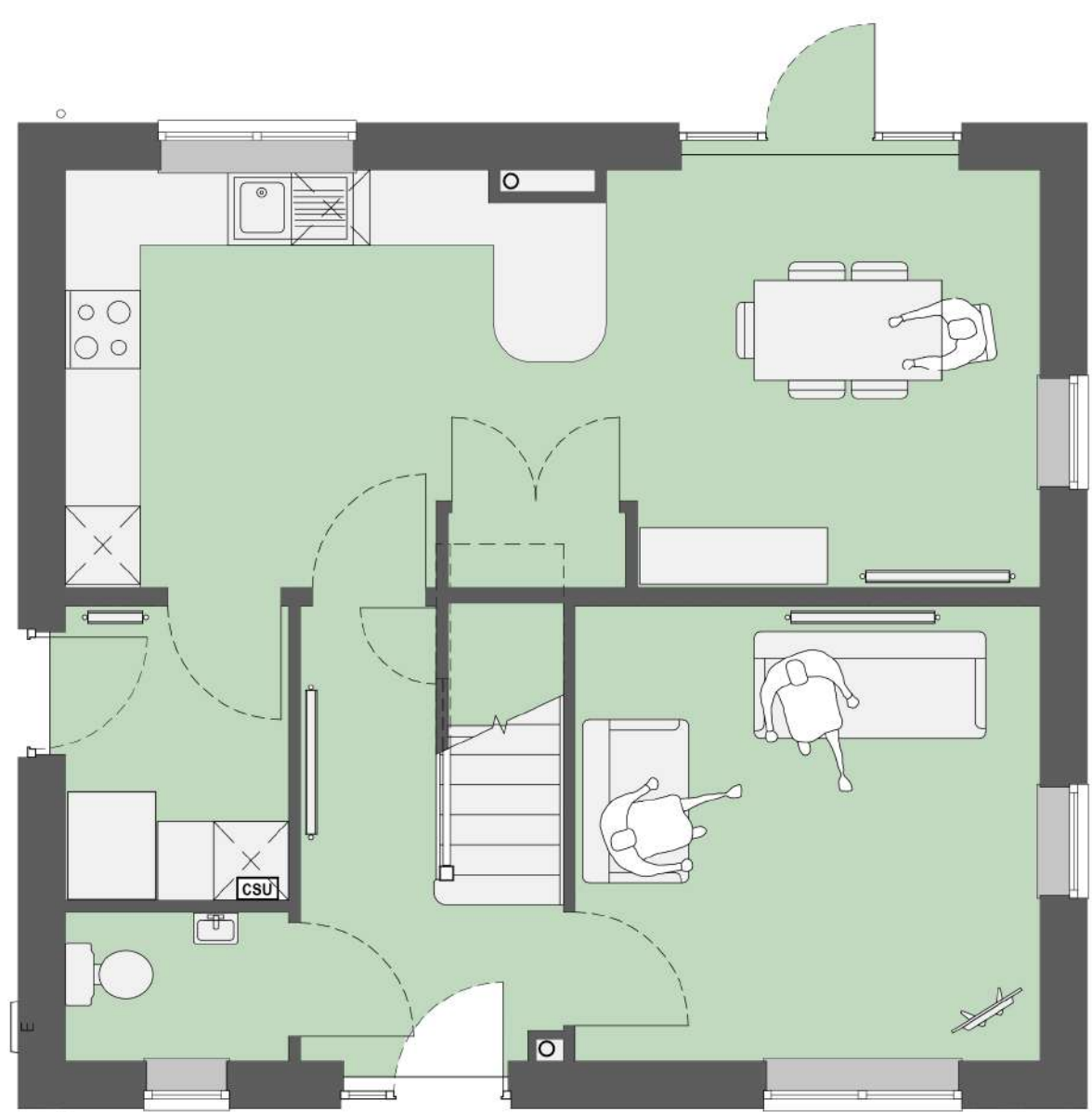
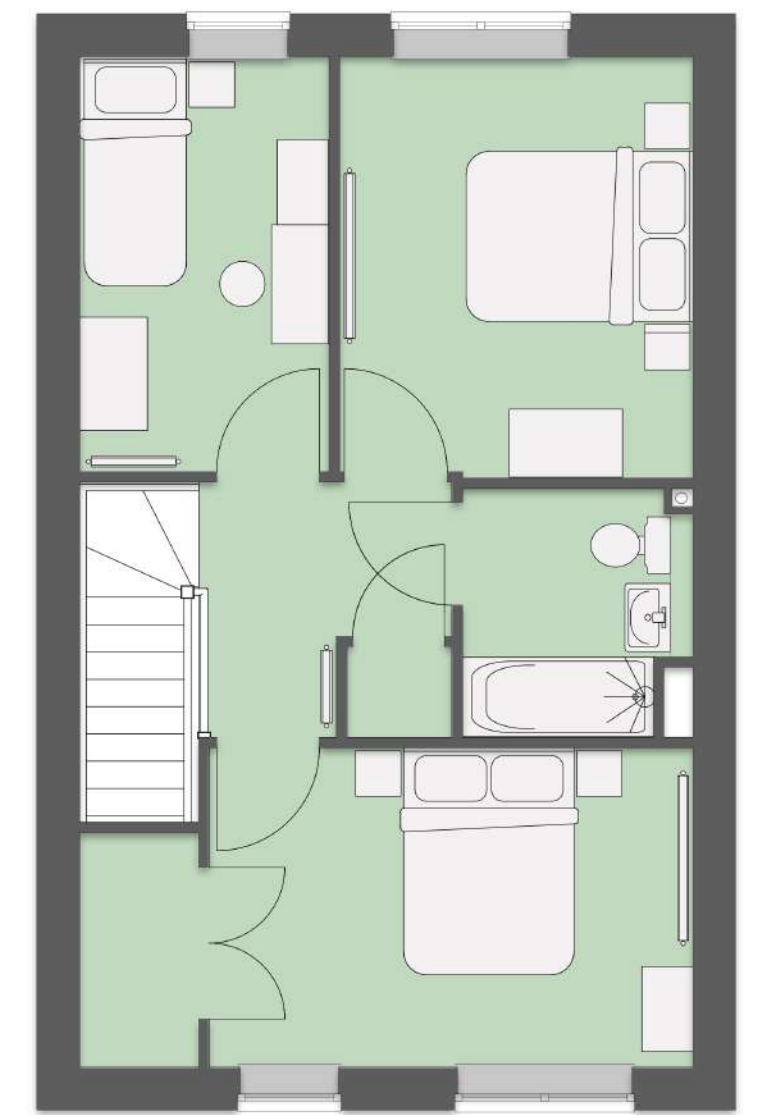
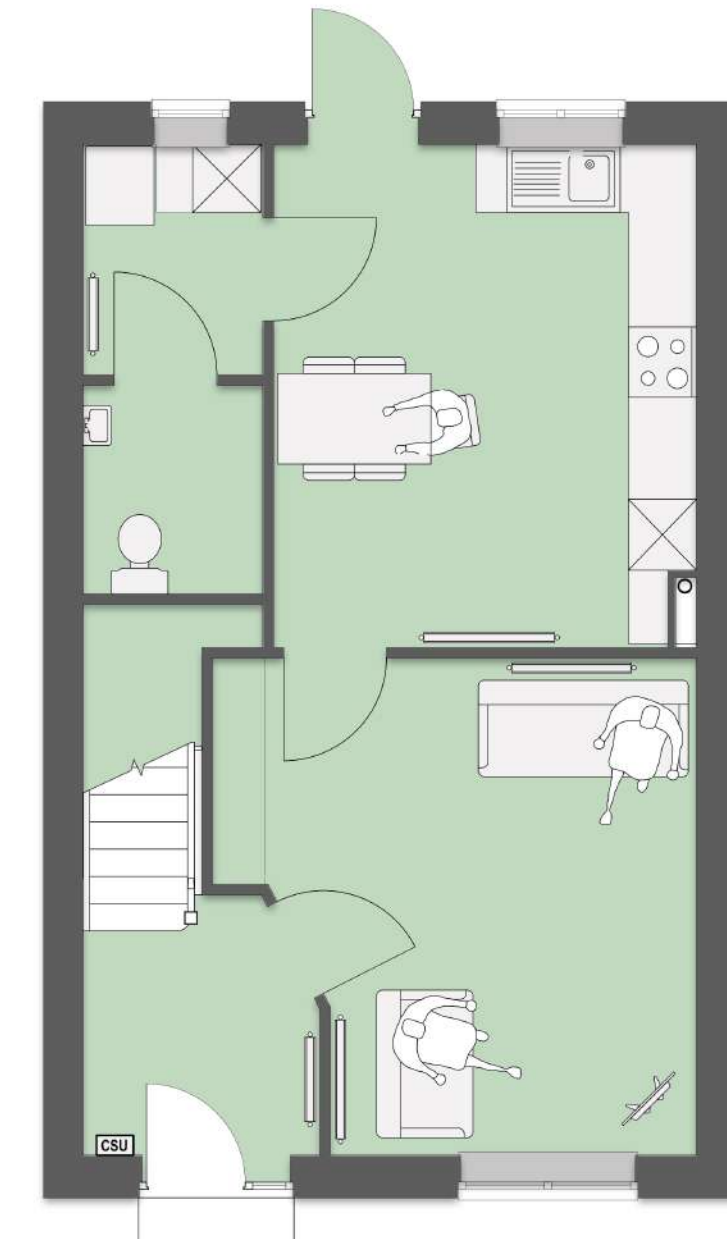
2 Bed 3 Person Bungalow



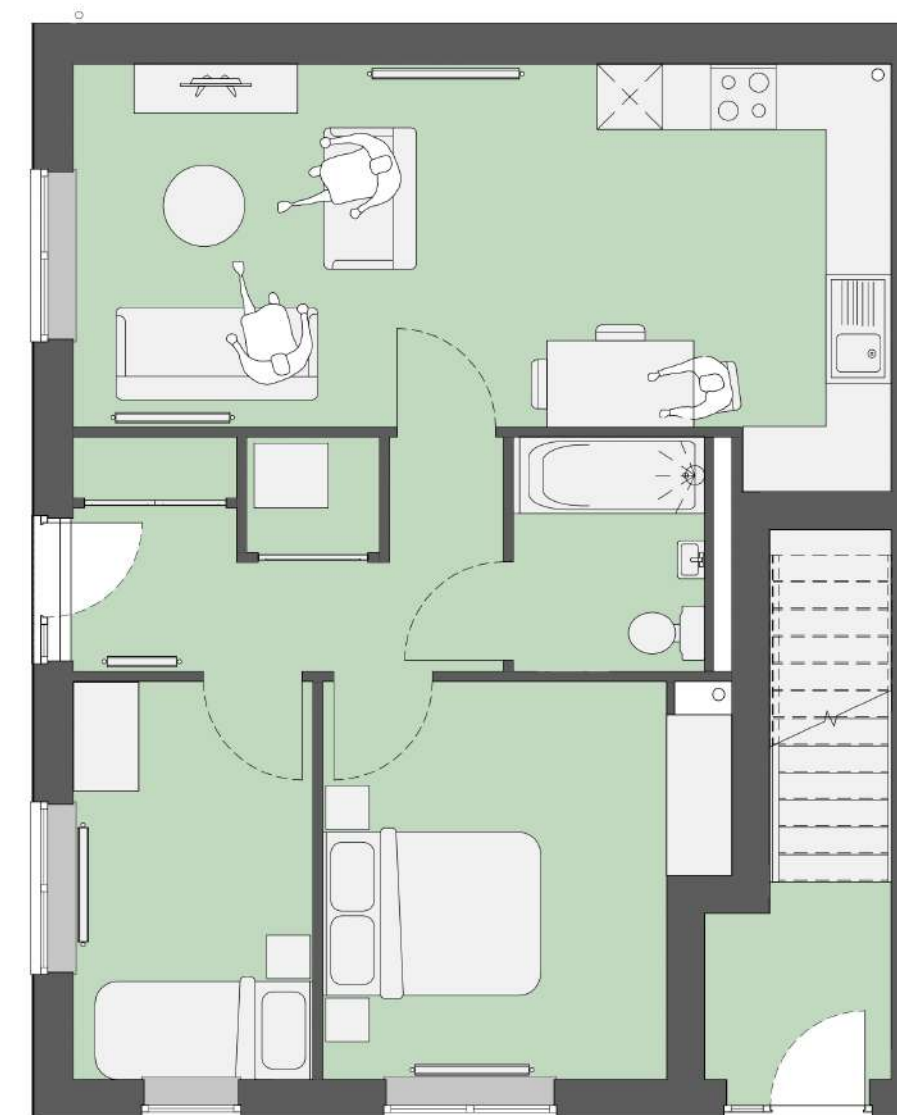
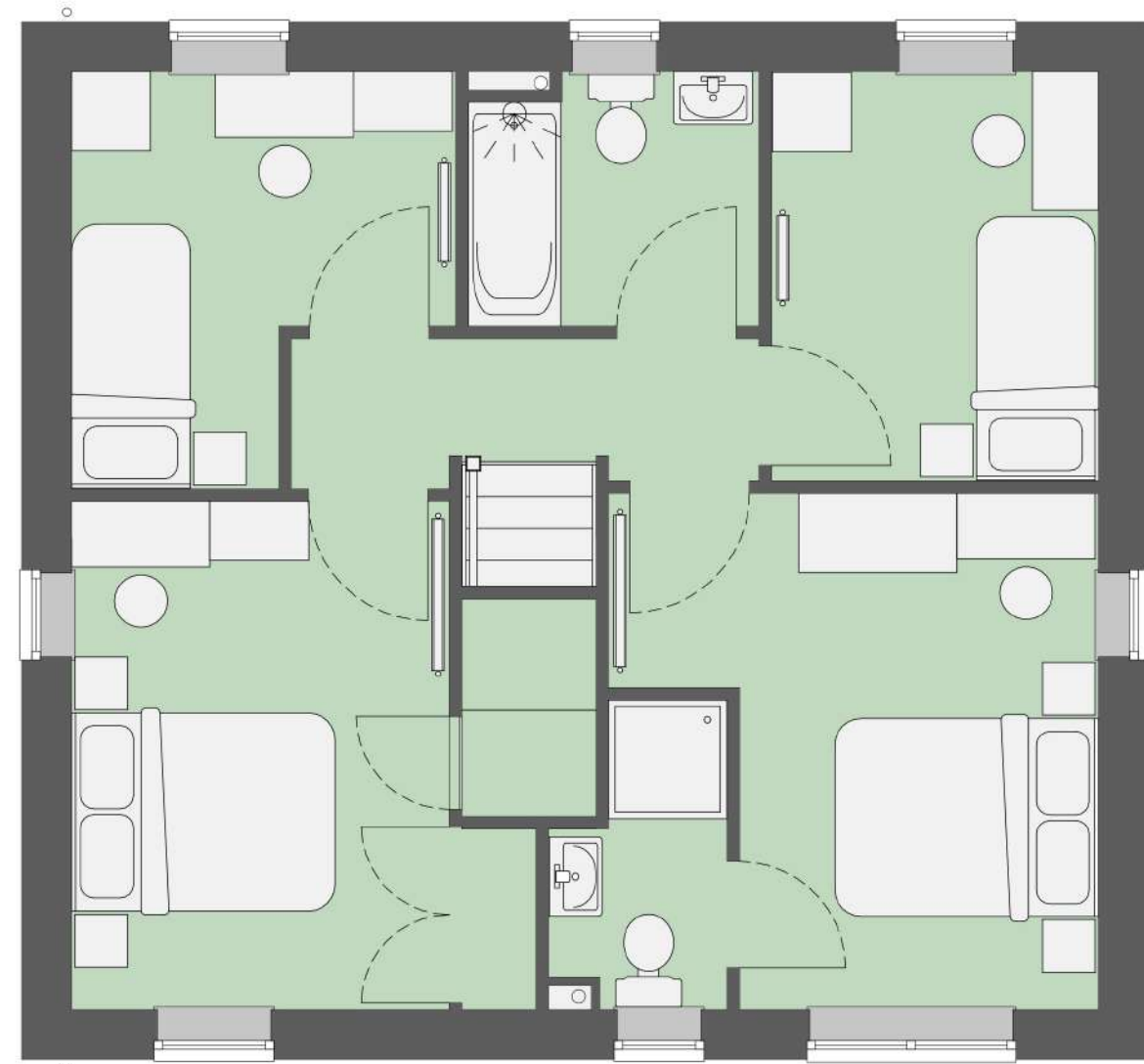
2 Bed 4 Person House



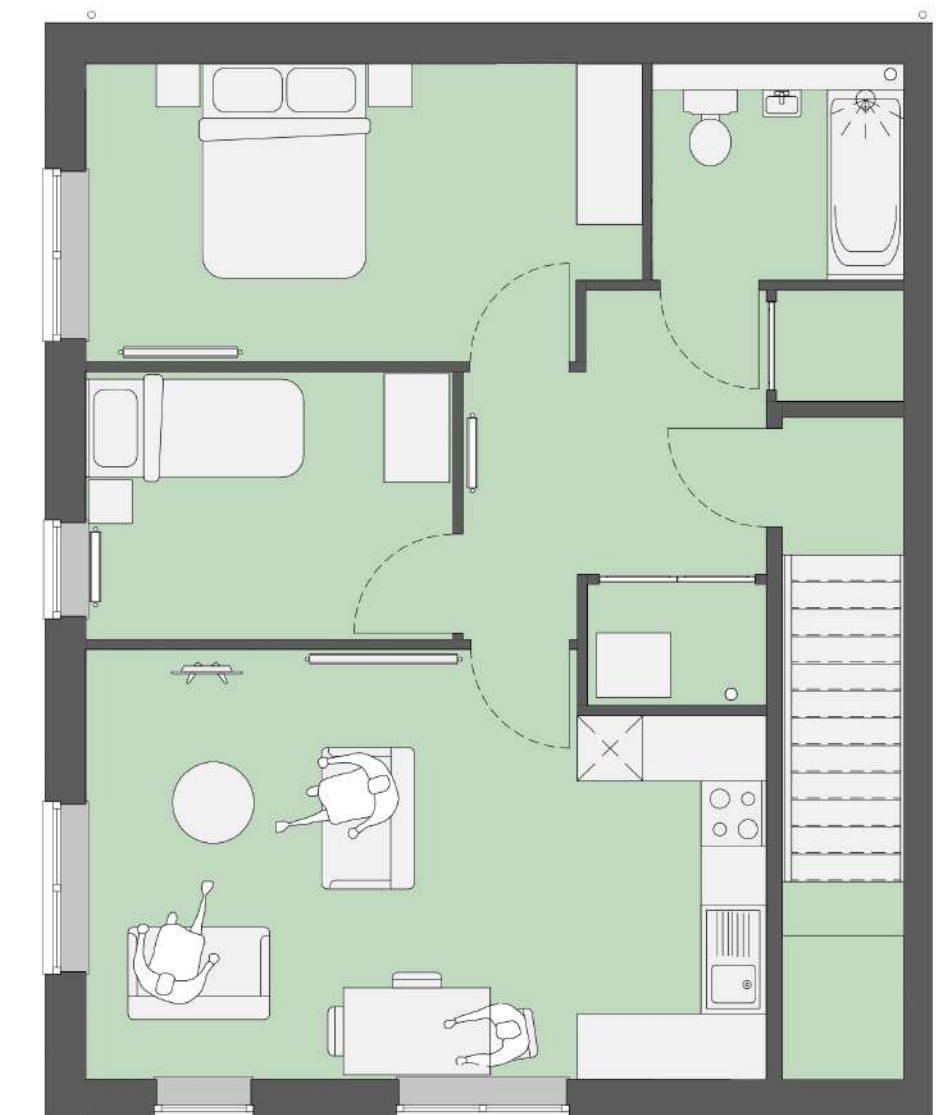
3 Bed 5 Person House



4 Bed 6 Person House



2 Bed 3 Person Tyneside Flat



Visualisation from Seaside Lane South